

Crime-lite 82S

SPARES & ACCESSORIES



foster + freeman

ANTI-GLARE

All Foster + Freeman anti-glare products are manufactured from Schott glass with an additional coating to suppress auto-fluorescent emissions from the Schott glass itself. This ensures maximum optical performance, particularly when using high power light sources.

Crime-lite	Violet	Blue	Blue Green	Green	Orange	UV
Filter Colour	Pale Yellow	Yellow	Orange	Bright Red	Red	UV
Wavelength	455nm	495nm	550nm	590nm	645nm	420nm
1% transmission	435nm	476nm	529nm	571nm	624nm	408nm
Product order codes						
Camera filters: 62mm	QCL/152	QCL/153	QCL/154	QCL/156	QCL/82S/017	QCL/157
Camera filters: 72mm	QCL/191	QCL/192	QCL/195	QCL/197	QCL/208	N/A
Viewing goggles	QCL/147	QCL/148	QCL/149	QCL/151	QCL/82S/016	N/A

BANDPASS FILTERS

A range of narrow bandpass camera filters and viewing goggles that isolate a band of wavelength from the spectrum to detect specific evidence types

Evidence type	Wavelength	Viewing Goggles	Camera Filter 62mm	Camera Filters 72mm
Blood	415nm	QCL/219	QCL/222	QCL/225
Body Fluids	530nm	QCL/220	QCL/223	QCL/226
Body Fluids	550nm	QCL/221	QCL/224	QCL/227

NARROWBAND TRIMMING FILTERS

Optional clip-on filters that attach directly to the Crime-lite 82S and reduce the output to 10nm. Narrowband trimming filters can often enhance the visibility of evidence by reducing background fluorescence.

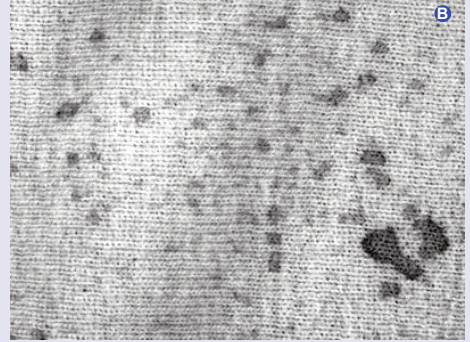
Crime-lite	Violet	Blue	Blue Green	Green	Orange
Trimming Filter	410nm	448nm	475nm	522nm	597nm
Product Order Code	QCL/82S/018	QCL/82S/019	QCL/82S/020	QCL/82S/021	QCL/82S/022

Infrared Examination Accessories



Evidence under going infrared examination using a Crime-lite IR light source is examined using an IR sensitive camera attachment.

Live video is sent via a high speed USB 2.0 interface to a connected PC running the Crime-lite Cam software provided.



Dried blood stains on black fabric viewed first under visible white light (A) and then under IR 800-900nm examination (B)

5MP UV-VIS-IR CAMERA

Crime-lite 82S Camera ① QCL/82S/CAM

Attaches to Crime-lite head unit



LABORATORY ARM

Crime-lite 82S Arm QCL/82S/025/IR
With internal USB & power cables

Tablet/ToughPad Mount QCL/241
Clamp QCL/242 or QCL/253 to laboratory arm or work bench

LABORATORY CART

Wheeled cart QCL/245
With mounting plate for laboratory arm

Laptop Mount QCL/247
for use with laboratory cart

UPS QCL/246
Fits in cart and provides 4 hours run time

TABLET PC

Tablet QCL/242
*High specification tablet computer for use in the laboratory
Contact us for latest specifications*

ToughPad QCL/253
*Ruggedized tablet computer for use at the crime scene
Contact us for latest specifications*

MISCELLANEOUS

IR Safety Glasses QCL/244
Classified to laser standard EN207

CSI Holding Frame QCL/252
For mobile use of 82S IR with ToughPad

Crime Scene Accessories

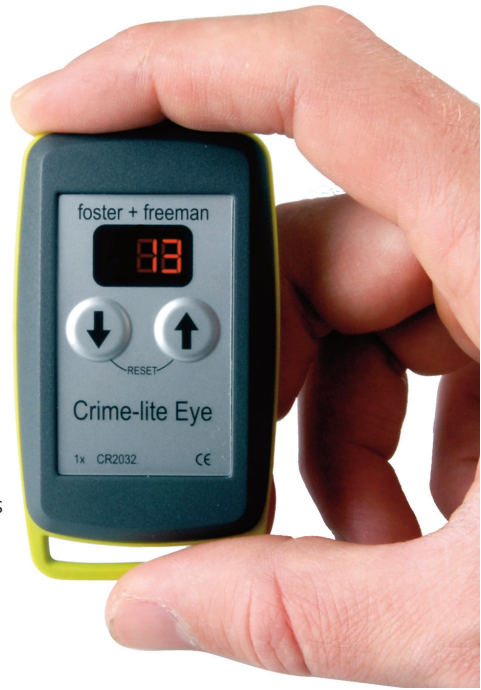
Crime-lite® Eye Darkness Adaptation Checker

The Foster+Freeman 'Crime-lite® Eye' is a simple pocket-sized device that helps crime scene examiners to achieve optimum dark adaptation when entering a dark environment to search for evidence using a forensic light source.

Moving from a bright well-lit environment into a darkened room causes a temporary 'blindness' during a short period of darkness adaptation.

During darkness adaptation, an examiner's vision suffers from low acuity and greatly reduced colour sensitivity.

A 2013 study by the UK Centre for Applied Science and Technology (CAST) demonstrated that examinations conducted without proper dark adaptation would result in evidence being missed.



Crime-lite® Eye Darkness Adaptation Checker

Order # QCL/264

A visual guide to when darkness adaptation has been achieved:

Using the Crime-lite Eye is easy. A numerical LED display shows the numbers 1-20 to indicate varying degrees of illumination intensity (from 1 very-dim to 20 very-bright). Once the selected level becomes visible, darkness adaptation has been achieved.



Darkness Adaptation Goggles

Order # QCL/266

Dark Adaptation Goggles can reduce adaptation times:

By wearing a pair of red-glass viewing goggles it is possible to dark adapt the eye prior to fluorescent examinations. The goggles may also be worn when moving between dark and light environments to ensure that the eye remains dark adapted.



EVIDENCE VIEWING BOX

Viewing box ① QCL/215

W:175mm D:285mm H:192mm

Weight: 1.75kg

Slot-in sockets for Crime-lite 82S and goggles

Camera Stand ② QCL/216

Compatible with most SLR cameras

Lens Bellows ③ QCL/217

Lens Bellows Adaptor ④ QCL/218



POWER SUPPLY COMPONENTS

18V Li-Ion battery

Single battery QCL/82S/008

Charger QCL/82S/009

Multi-port charger (4x) QCL/82S/027

In-car charger QCL/82S/010

24V NiMH battery

Battery adaptor QCL/82S/011

AC adaptor QCL/80

Carry pouch QCL/82S/012

SCENE OF CRIME CASES

Rugged, waterproof cases

Small (4 lights) QCL/82S/013

Large (9 lights) QCL/82S/014

UV-Vis-IR Camera Case QCL/82S/026

Small

Accommodates camera & accessories

Carry Case Trolley QCL/206

For use with all cases

MISCELLANEOUS

Tripod QCL/14

Requires adaptor QCL/15

Wrist Lanyard QCL/82S/023

Prevents dropping

Belt Clip QCL/82S/024

Attach a single light source to a belt





www.fosterfreeman.com

Head Office & UK Sales Office

Foster + Freeman Ltd
Vale Business Park
Evesham
Worcestershire
WR11 1TD UK

+ 44 (0) 1386 768050
sales@fosterfreeman.com

US Sales Office

Foster + Freeman USA Inc
46030 Manekin Plaza
Sterling
Virginia 20166
USA

+1 888 445 5048
usoffice@fosterfreeman.com

Sales Support and Feedback

Foster + Freeman welcome feedback from Customers regarding this product. Please contact one of our offices if you would like to pass on your comments. Foster + Freeman are pleased to offer advice, installation, training and on-site maintenance worldwide for all of their products.

Specification

Foster + Freeman reserve the right to alter the specification of this product, accessories and consumables without prior notice.

Copyright

This document contains proprietary information that is protected by copyright. All rights are reserved. No part of this publication may be reproduced in any form whatsoever without the prior, written permission of Foster + Freeman Ltd. Copyright © Foster + Freeman Ltd

foster + freeman